

Riverview

Retirement Community

UPDATE TO YOUR OWN 1 BED / 1 DEN / 2 FULL BATHS



2123 East North Crescent



Window over kitchen sink, choose new backsplash



Slider to outside and gas fireplace. Extra windows



Large back patio space with storage and fence.

ACCOMMODATION FEE \$395,000
MONTHLY SERVICE FEE INCLUDES MAINTENANCE AND GROUNDS KEEPING

House Features

- Main bed has walk through closet to the en suite
- Lovely hostas garden off the front porch
- Back patio is fenced, water feature, and locked patio storage
- Large laundry room with extra storage
- Gas fireplace
- 1 car garage with attic storage
- 1,137 Square Feet



Lisa Egger
509-482-8174

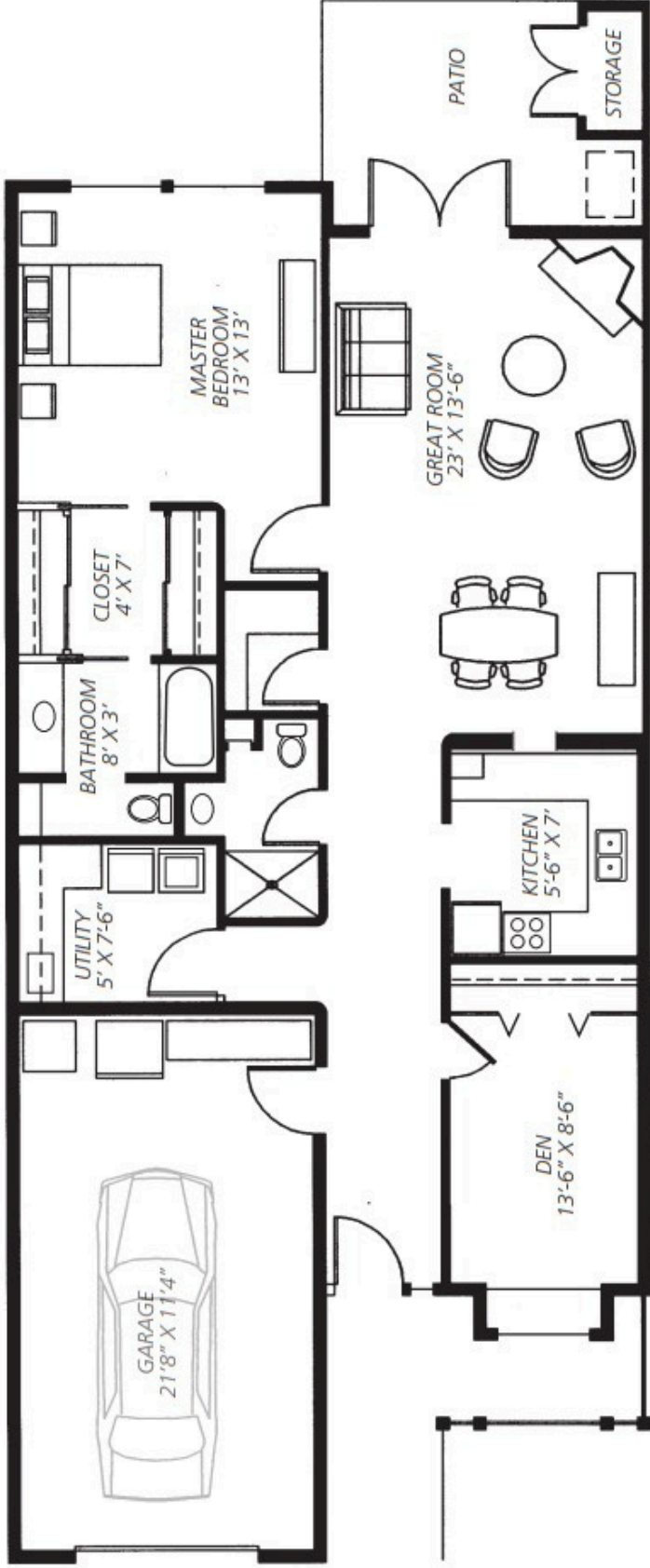
legger@riverviewretirement.org

Schedule a Tour Today!

www.riverviewretirement.org

Favorite Amenities

- Aquatic and Fitness Center ; RiverBrew Cafe; Dog Park
- Centennial Trail Access; Community Wood Shop; Community Gardens



Village East - 1,137 sq. ft. livable space · One car garage