



SOUTH VILLAGE HOME WITH MODERN UPDATES



2335 N. Crestline



Updated Appliances, Tile Back Splash, and Counter Tops!



Large Living Area with Vaulted Ceiling, Skylights, and Back Patio



Updated Tile, Counters and Showers - Ready for Move-in!

ACCOMMODATION FEE \$379,900
MONTHLY SERVICE FEE INCLUDES MAINTENANCE AND GROUNDS KEEPING

House Features

- 2 Bedrooms / 1.5 Bath
- ½ Bath with Laundry
- Updated Kitchen
- Skylights and vaulted ceilings in the great room
- Full-size Laundry hook-ups
- 1-Car Garage
- Open Back Patio
- 1,030 Square Feet



Lisa Egger
509-482-8174
legger@riverviewretirement.org



Vivian Bazan
509-482-9588
vbazan@riverviewretirement.org

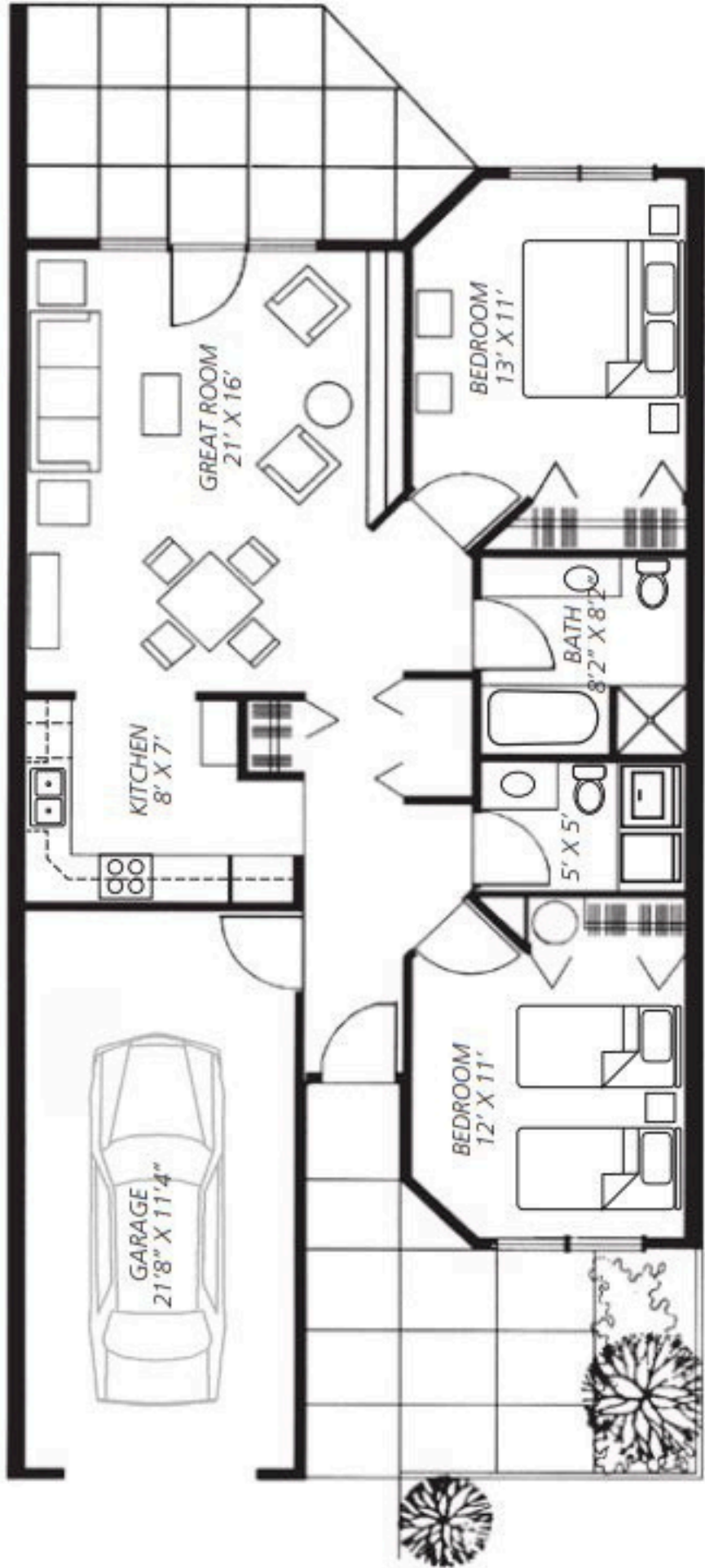
Schedule a Tour Today!



Favorite Amenities

- Aquatic and Fitness Center
- RiverBrew Cafe
- Centennial Trail Access
- Community Wood Shop
- Community Gardens
- Dog Parks
- Great Neighbors
- Activities and Events

www.riverviewretirement.org



Village South - 1,030 sq. ft. *livable space*