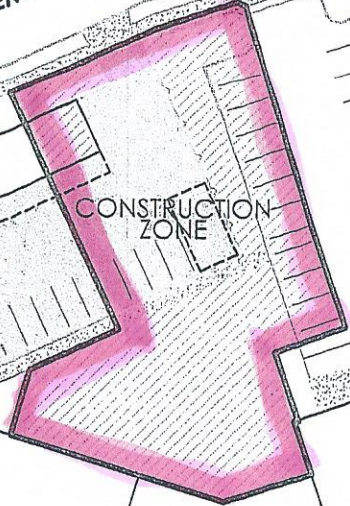


**TERRACE NORTH PARKING AREA**

CONSTRUCTION IS STARTING AUGUST 7TH. RESIDENTS WILL STILL HAVE PARKING ACCESS UNTIL MID. SEPTEMBER. THERE WILL BE ONE ENTRY AND EXIT LOCATED TO THE WEST OF THE PARKING AREA. WHEN THIS AREA IS VACATED THE NEW RESIDENT PARKING WILL BE LOCATED AT THE MAIN ENTRY PARKING.



**RIVERVIEW  
RETIREMENT  
COMMUNITY**

1801 East Upriver Drive  
Spokane WA. 99207-5181  
509.483.6483

PROJECT:  
PARKING AREA CHANGES

LOCATION:  
Spokane, WA.

PREPARED FOR:  
Terrace Residents

KEY MAP

NO.	DATE	REVISION

PROJECT DIRECTOR  
Tracy Schow

PROJECT MANAGER  
N/A

PROJECT ARCHITECT  
N/A

PROJECT TEAM MEMBER  
TD, DS, AA

CHECK

TITLE

PROJECT NO.  
0014

DATE  
8.1.17

PROJECT NETWORK PATH

SHEET NUMBER  
n/a